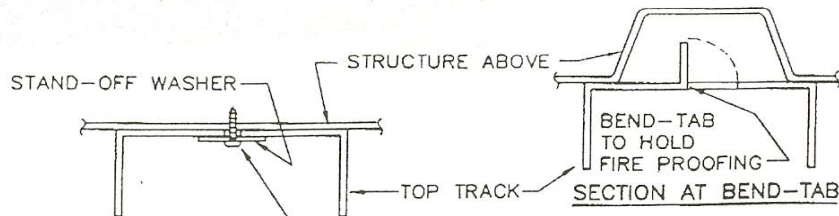
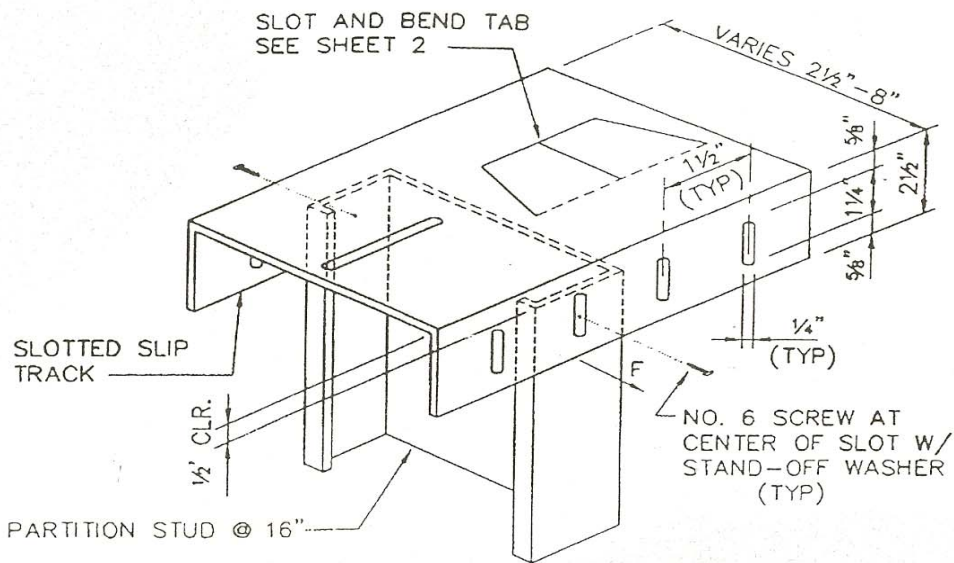


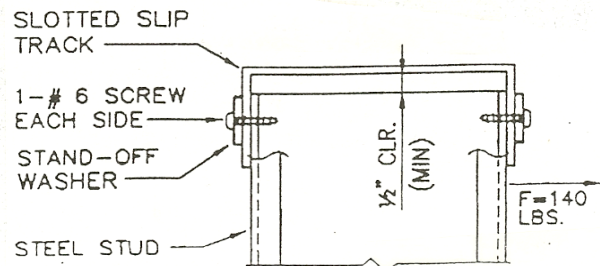
METAL-LITE

Solutions for the Metal Stud Industry



10 SCREW TO STRUCT.
8" OR 12" O.C., SEE ISO.
VIEW ABOVE AND AS
DETERMIND BY S.E.O.R.
SEE NOTE 1 ON DRWG. 3

SECTION AT SCREW

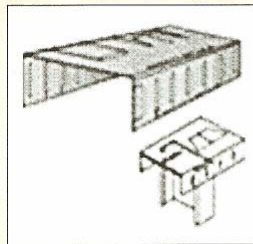


SECTION

SOLUTIONS

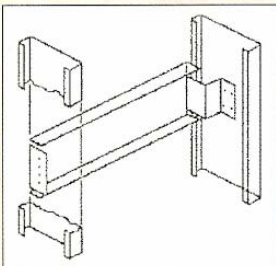
Metal-Lite products are UL Listed and Approved and can be used on projects, anywhere in the United States under any Code for the light gauge, metal stud framing industry.

**THE SYSTEM
Slotted Track**



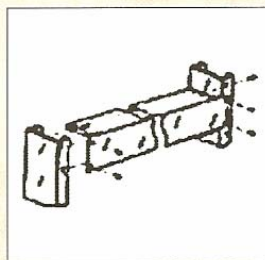
Single track system providing a fast and economical head-of-wall installation that cycles and is fire resistant.

FLUSH MOUNT



Easy and fast to install between studs, this is the backing solution for a flush smooth wall.

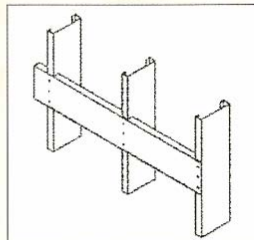
3 IN ONE



One piece wall backing, bridging, and blocking replaces conventional wall backing, channel iron, and fire blocking.

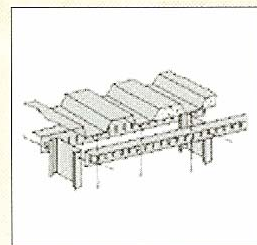
NOTCH-TITE

Economical solution to backing requirements for tubs and showers, wall mounted equipment, furniture, and case work.

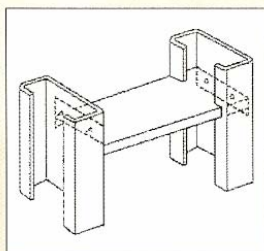


ANGLE SYSTEM

Two angle system used with any standard wall width and sprayed on fire proofing. Track slots allow for structural movement. No extra labor costs!



FIRE-TITE



Cost effective, quickly installed bridging and blocking giving the largest percentage of closure between studs.

STAIR-TITE

Backing solution for handrails in stairwells meeting the requirements of the Americans with Disabilities Act.

